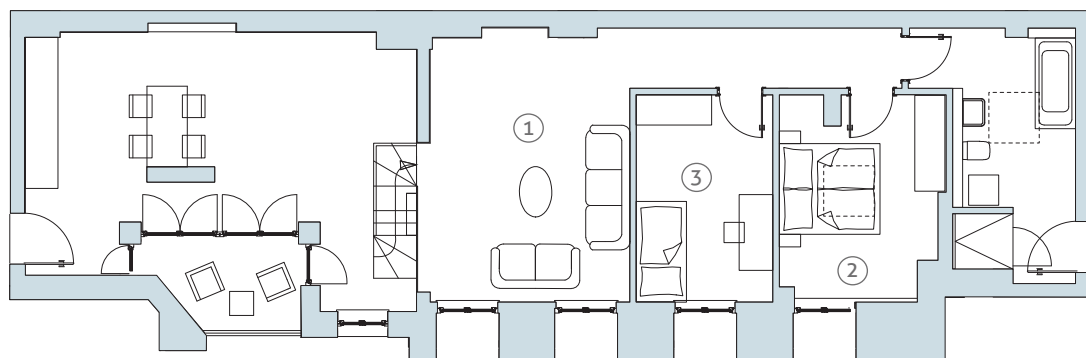
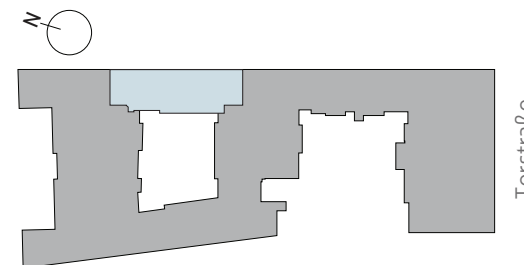


3-ZIMMER-WOHNUNG / 3-ROOM-APARTMENT

Torstraße 225 A, DG, WOHNUNG 84 / PENTHOUSE LEVEL, APARTMENT 84



| | | | |
|-------------------------------------|----------------------|--------------------------------|-----------------------------|
| ① Wohnzimmer / Living room | 21,96 m ² | Flur / Hall | 6,48 m ² |
| ② Schlafzimmer / Bedroom | 12,64 m ² | Terrasse (50%) / Terrace (50%) | 2,40 m ² |
| ③ Kinderzimmer / Children's bedroom | 11,17 m ² | | |
| Küche / Kitchen | 33,93 m ² | | |
| Bad / Bathroom | 12,86 m ² | | |
| | | GESAMTFLÄCHE | 101,44 m² |
| | | Total living space | |